



GLOBE VALVES

valves and actuators

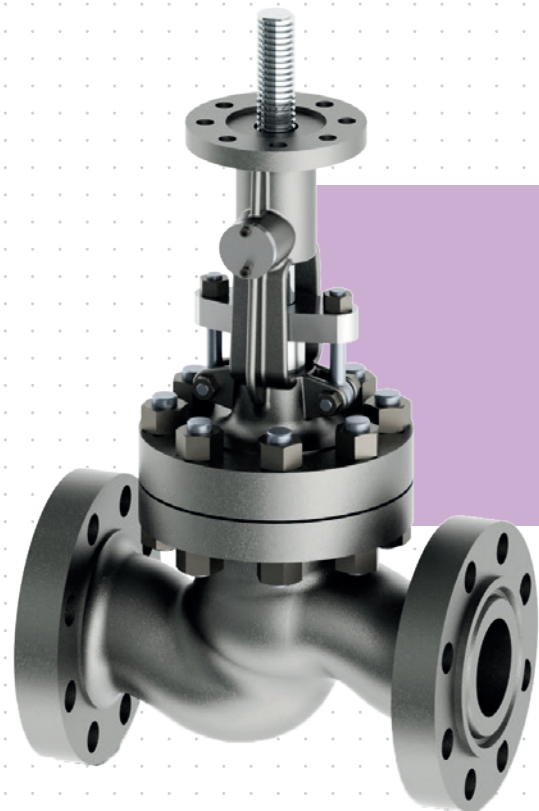
introduction

PETROLVALVES is a leading manufacturer of valves for the oil and gas industry. Formed in 1956, **PETROLVALVES** has grown to a company with sales, services and manufacturing facilities throughout the world with direct presence in the United States, Norway, United Kingdom, Italy, Singapore and Australia.

The continuous investment in development of new technology has resulted in the growth and ongoing success of our company. **PETROLVALVES** line of production includes some of the most sophisticated valve products in the world with a strong focus on the development of custom or niche products designed according to customer's specific requirements.

PETROLVALVES has been manufacturing globe valves since the late 1950s being sooner involved in the biggest oil&gas projects.

PETROLVALVES experience in the globe valve design grew faster and faster, driving the company to challenge itself with more and more complex products.



globe valves BASIC INFORMATION

Standard service: use in natural gas, LNG, crude oil, refined products transmission lines as well as in many other general industrial and oil&gas applications.

For example:

- ▶ Pumping, compression and reinjection units
- ▶ Offshore platforms,
- ▶ Onshore terminals,
- ▶ Measuring stations
- ▶ Blowdown

	DESIGN	PRESSURE CLASS	MODEL
GLOBE BOLTED BONNET	STRAIGHT PATTERN	API 602 BS 1873	102
	STRAIGHT PATTERN STOP CHECK	API 602 BS 1873	106
	STRAIGHT PATTERN CRYOGENIC	API 602 BS 1873	730
	ANGLE	API 602 BS 1873	105
	Y PATTERN FULL BORE	API 602 BS 1873	123
PRESSURE SEAL	STRAIGHT PATTERN	API 602 BS 1873	120
	STRAIGHT PATTERN STOP CHECK	API 602 BS 1873	150
	ANGLE	API 602 BS 1873	170
	Y PATTERN	API 602 BS 1873	121
	Y PATTERN STOP CHECK	API 602 BS 1873	151
	STRAIGHT PATTERN FULL BORE	API 602 BS 1873	122

01

SPECIAL SERVICE

- ▶ HIGH/LOW TEMPERATURE
- ▶ CRYOGENIC

RANGE OF PRODUCTION (*)					
API 602 / BS 1873 SIZE	150 to 600 up to 30"	900 up to 24"	1500 up to 14"	2500 up to 10"	4500 up to 8"
(*) for non listed dimensions contact PV's staff					

globe valves DESIGN FEATURES

MAIN DESIGN FEATURES	SPECIAL FEATURES	ACCESSORIES
<ul style="list-style-type: none"> ▶ General design ASME B16.34/API 602 ▶ Face to face dimensions ASME B16.10 ▶ Flange design ASME B16.5 and ASME B16.47 ▶ Butt welding design ASME B16.25 ▶ Fire safe design ▶ Anti blow out stem ▶ Fully maintainable on line 	<ul style="list-style-type: none"> ▶ NACE Requirement ▶ Ad hoc engineering to suit customer projects requirements 	Stem Injection: <ul style="list-style-type: none"> ▶ NPT or gas threaded ▶ Double barrier type

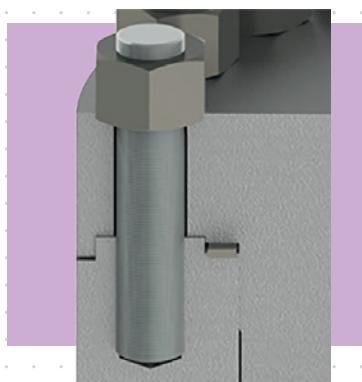
PETROLVALVES engineering department is specialized in fulfilling all customer's requirements and project specification.



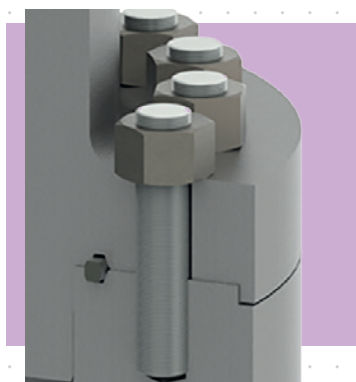
sealing DESIGN

BODY SEALING

All primary body gaskets are metal to metal, **spiral wound type** or **ring joint type**.



up to class 600



from class 900 up to class 4500

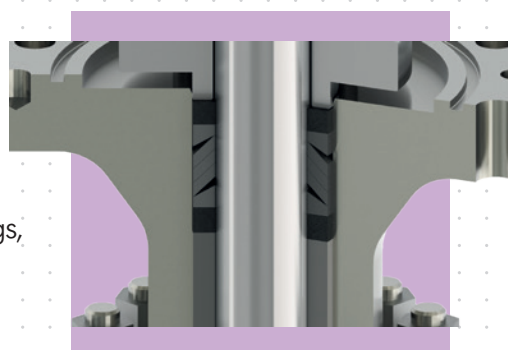
03

STEAM SEALING

Graphite sealing

Available upon request:

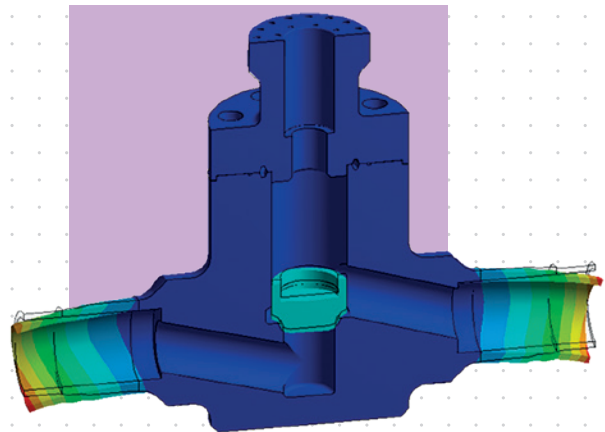
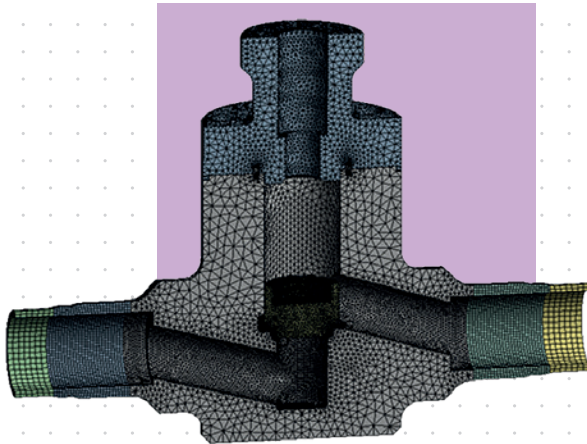
- ▶ **PTFE Chevron type:** Thermoplastic multiple / V-rings, with or without lantern ring.
- ▶ Sealant injection facility
- ▶ Redundant elastomeric (AED) stem gasket



seat to obturator DESIGN

METAL SEAT

Manufactured with the help of the most updated technologies to find the optimal geometric configuration of the disc and the seat ring in order to achieve a perfect seal. Numerical simulations are carried out to optimize any project solution.



materials

PETROLVALVES Globe valves have been designed for use with various combinations of materials which are selected to better suit service conditions

AVAILABLE BODY MATERIAL SELECTION	AVAILABLE OBTURATOR MATERIAL SELECTION METAL SEAT EXECUTION	AVAILABLE SEAT MATERIAL SELECTION METAL SEAT EXECUTION
<ul style="list-style-type: none"> ▶ CS, LTCS (*) ▶ Low Alloy Steel (*) ▶ Stainless Steel ▶ Duplex /Superduplex /Ni Alloy 	<ul style="list-style-type: none"> ▶ CS, LTCS (*) ▶ Low Alloy Steel (*) ▶ Austenitic / Ferritic / Martensitic Stainless Steel ▶ Duplex /Superduplex /Ni Alloy <p>(*) CRA weld overlay option available</p> <p>Note Stellite added on obturator contact area</p>	<ul style="list-style-type: none"> ▶ CS, LTCS ▶ Low Alloy Steel ▶ Austenitic / Ferritic / Martensitic Stainless Steel ▶ Duplex /Superduplex /Ni Alloy <p>Note Stellite added on seat contact area</p>



MANUFACTURING PLANT

Viale G. Borri, 42

21053 Castellanza (VA), Italia

P +39 0331 334111

W petrolvalves.com